



# Internal Signage Guidelines

Revision 1.0

**Type 1a** Directional Page 06  
Wall mounted primary directory

**Type 1b** Directional Page 07  
Wall mounted sub directory

**Type 1c** Directional Page 08  
Suspended sign

**Type 2a** Room Identification Page 09  
Solid door with latch lock

**Type 2b** Room Identification Page 10  
Solid door with lock only

**Type 2c** Room Identification Page 11  
Glazed door with mullion

**Type 3** Vinyl Graphics Page 12  
Fully glazed door



## 01 Font Guideline

Utilising the brand font is an integral way to create a consistent identify and create a cohesive identification system. Upper case and lower case are used to create a typographic hierarchy. Upper case is used for all headings, primary and secondary with operational information illustrated in lower case.

### Univers Condensed

---

**A B C D E F G H I J K L M N O P Q R S T U V W X Y Z**

**a b c d e f g h i j k l m n o p q r s t u v w x y z**

**1 2 3 4 5 6 7 8 9 0**

### Univers Bold Condensed

---

**A B C D E F G H I J K L M N O P Q R S T U V W X Y Z**

**a b c d e f g h i j k l m n o p q r s t u v w x y z**

**1 2 3 4 5 6 7 8 9 0**

Helvetica

---

A B C D E F G H I J K L M N O P Q R S T U V W X Y Z  
a b c d e f g h i j k l m n o p q r s t u v w x y z  
1 2 3 4 5 6 7 8 9 0

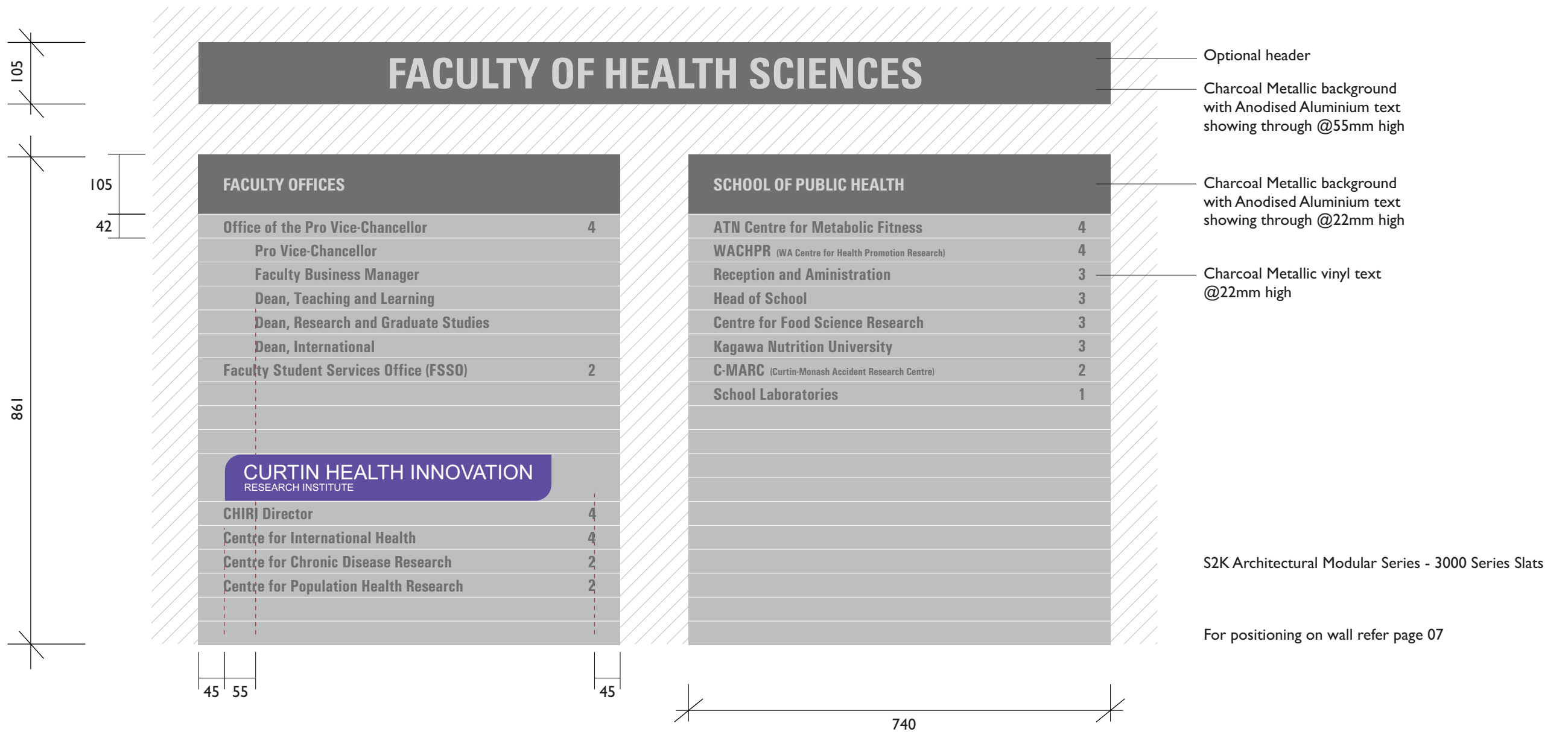
Whenever reproducing colour always refer to the appropriate colour specifications for the chosen media, relying on PANTONE® chips or the current PANTONE® colours standard listed in the latest edition of the PANTONE® Colour Formula Guide to match colour.

The specification below cover most print and on-screen requirements

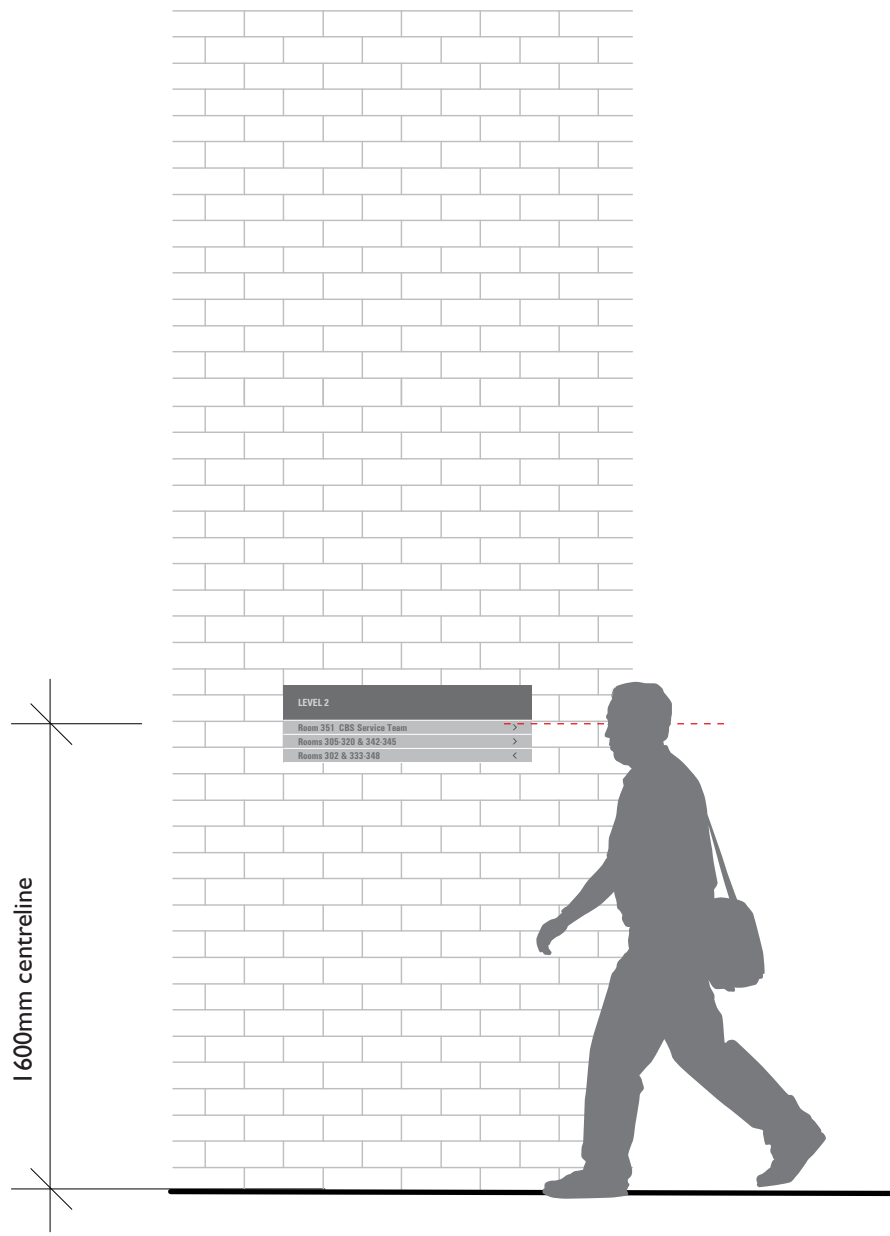
Curtin University of Technology  
Colour palette



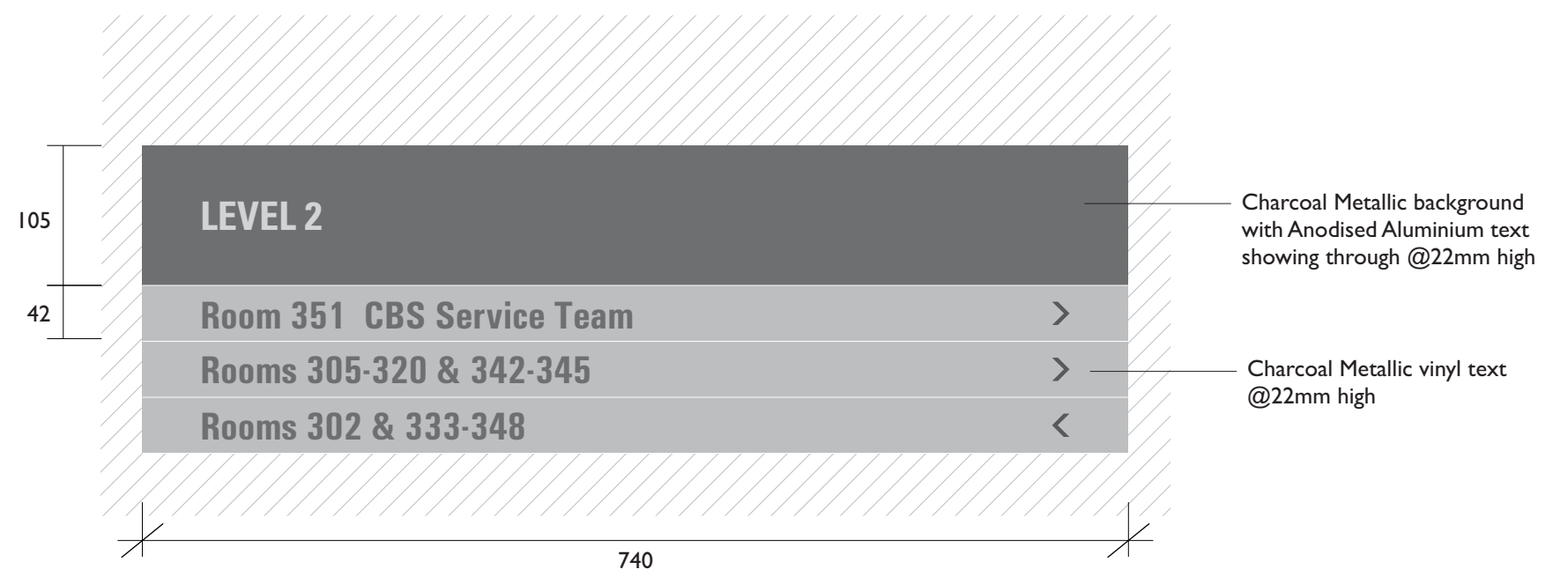
		Curtin Grey	Curtin Gold	Curtin Black	Curtin Green
Spot colour	Coated paper	Pantone® Cool Grey 8C	Pantone® 125C	Pantone® Process Black C	Pantone® 341C
	Uncoated paper	Pantone® Cool Grey 8U	Pantone® 125U	Pantone® Process Black U	Pantone® 341U
Process colour		C 0 M 0 Y 0 K 40	C 0 M 23.5 Y 100 K 27.5	C 0 M 0 Y 0 K 100	C 100 M 0 Y 69 K 30.5
RGB		R 145 G 146 B 150	R 181 G 140 B 10	R 61 G 51 B 43	R 0 G 122 B 94
Web safe		Hex #99 99 99	Hex # B58B0B	Hex #00 00 00	Hex #007A5E
Dulux colour (or match)		Flooded Gum PG2C3	Balsam Pear P16 F9	Black PG1 A9	Green Paw Paw P26 E9
Vinyl Colours		Calon Medium Grey 50	Calon Gold Metallic 04 OR Calon Imitation Gold 59	Calon Black 03 OR Matt Black 40	Calon Medium Green 106



**Type Ia**  
**Front Elevation**  
Example only

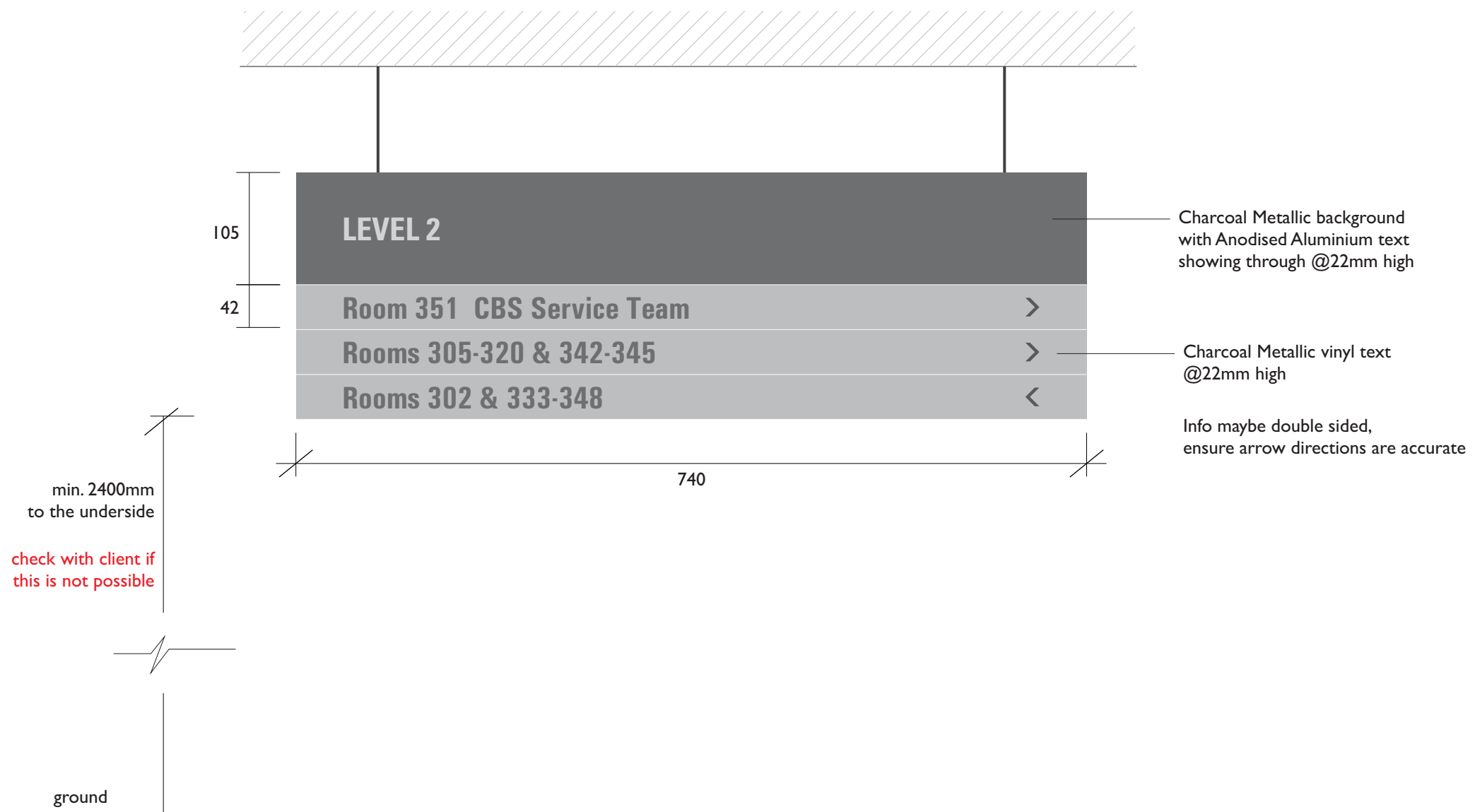


setup principle also applies to Type I primary directory



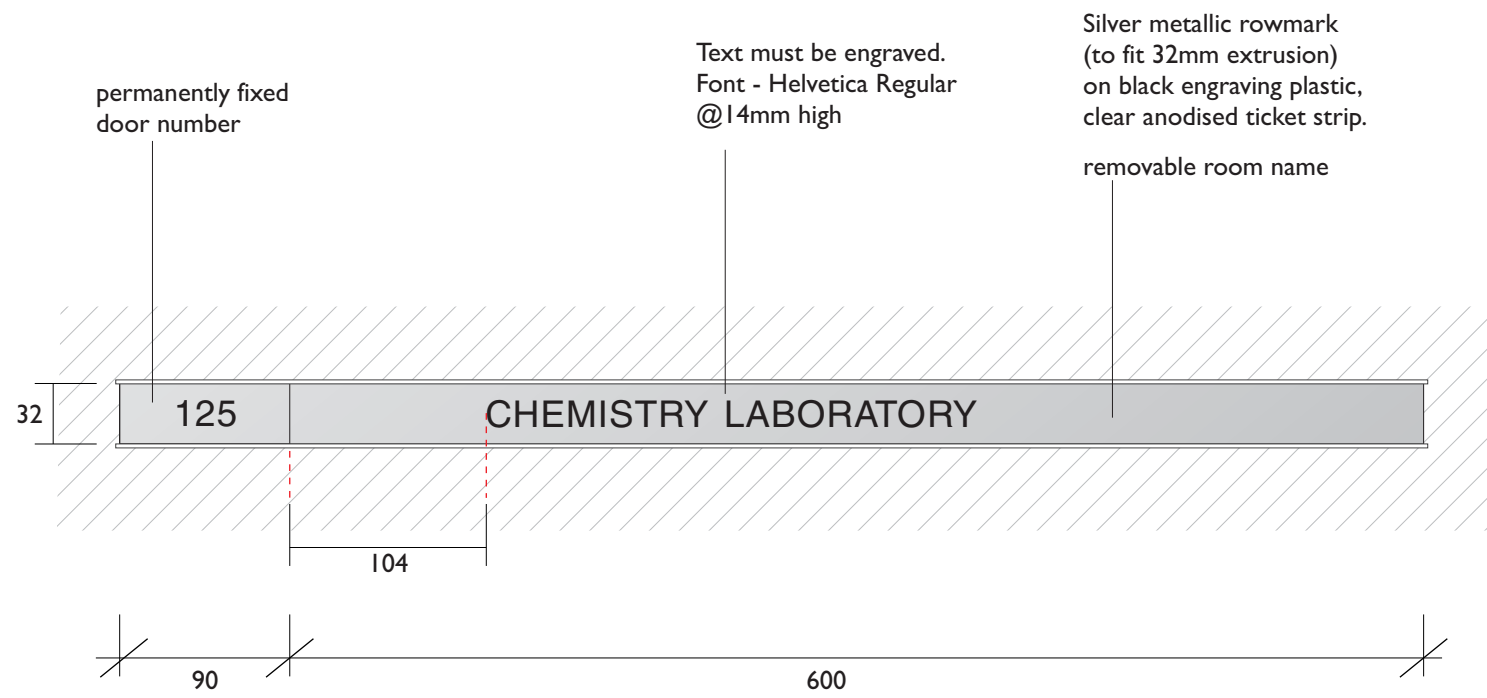
S2K Architectural Modular Series - 3000 Series Slats

**Type 1b**  
**Front Elevation**  
Example only



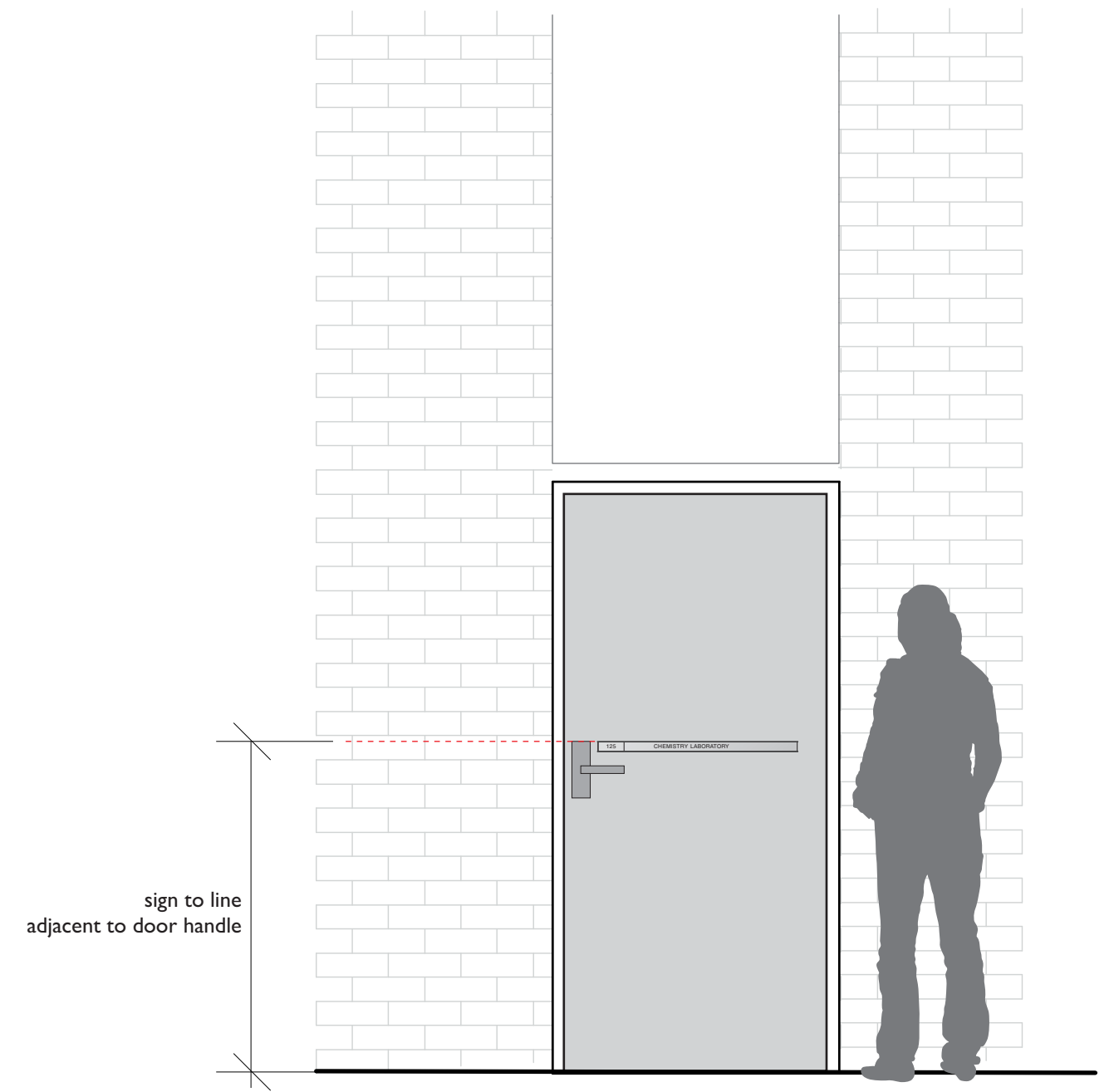
Type 1c  
**Front Elevation**  
 Example only





Type 2a  
**Front Elevation**  
 Example only

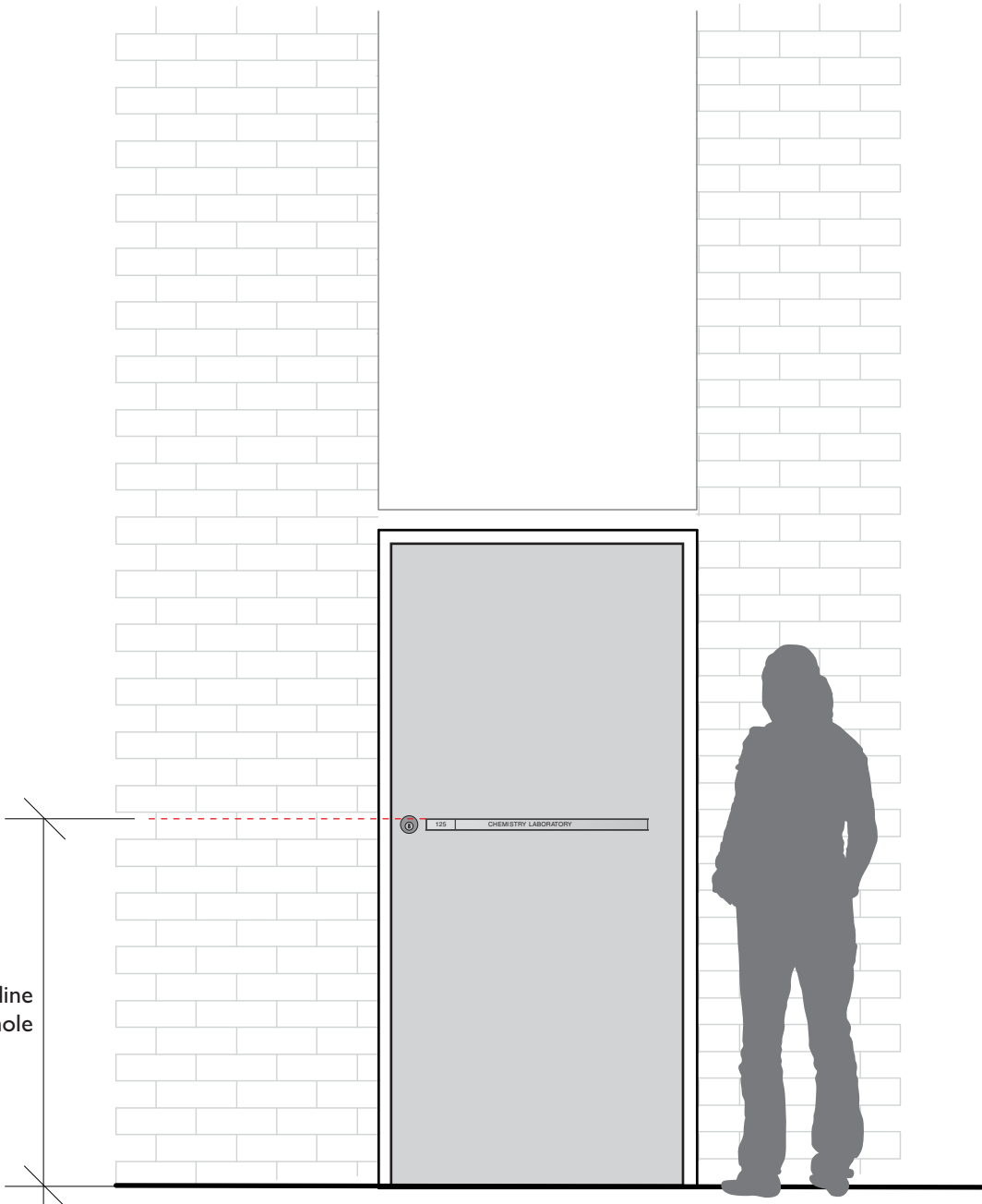
NOTE: Text will be specific to room or building.



Type 2a - Solid door with latch lock  
**Front Elevation**  
 Example only

NOTE: Text will be specific to room or building.

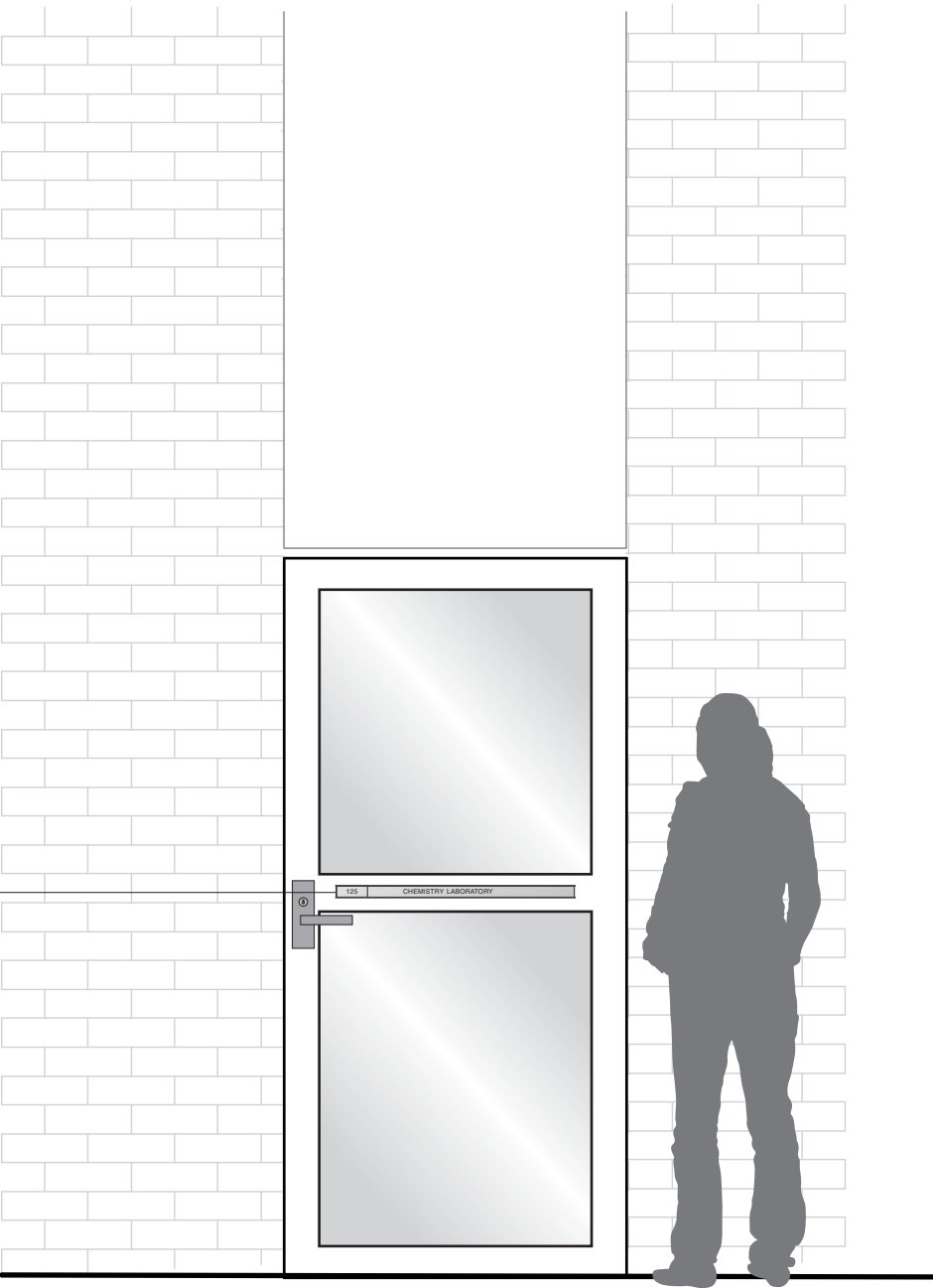
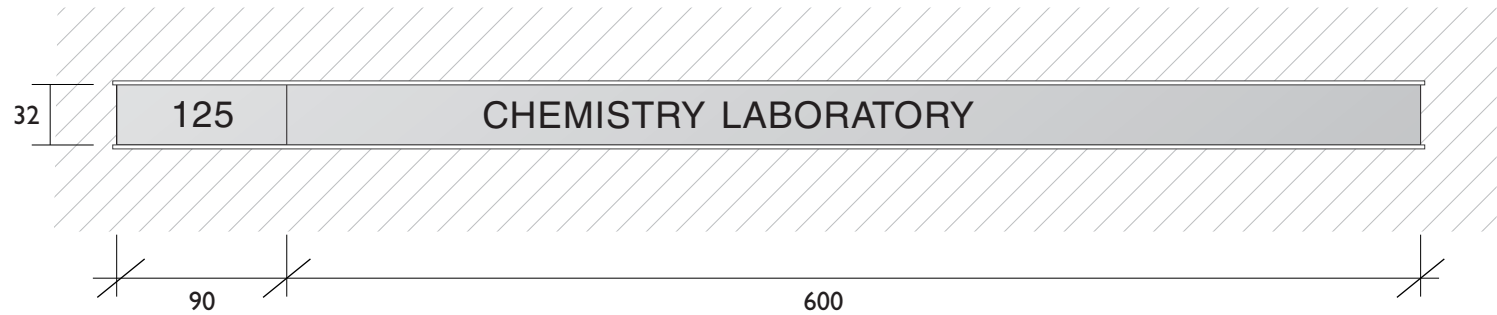
Sign specification as Type 2a



Type 2b - Solid door with lock only  
**Front Elevation**  
Example only

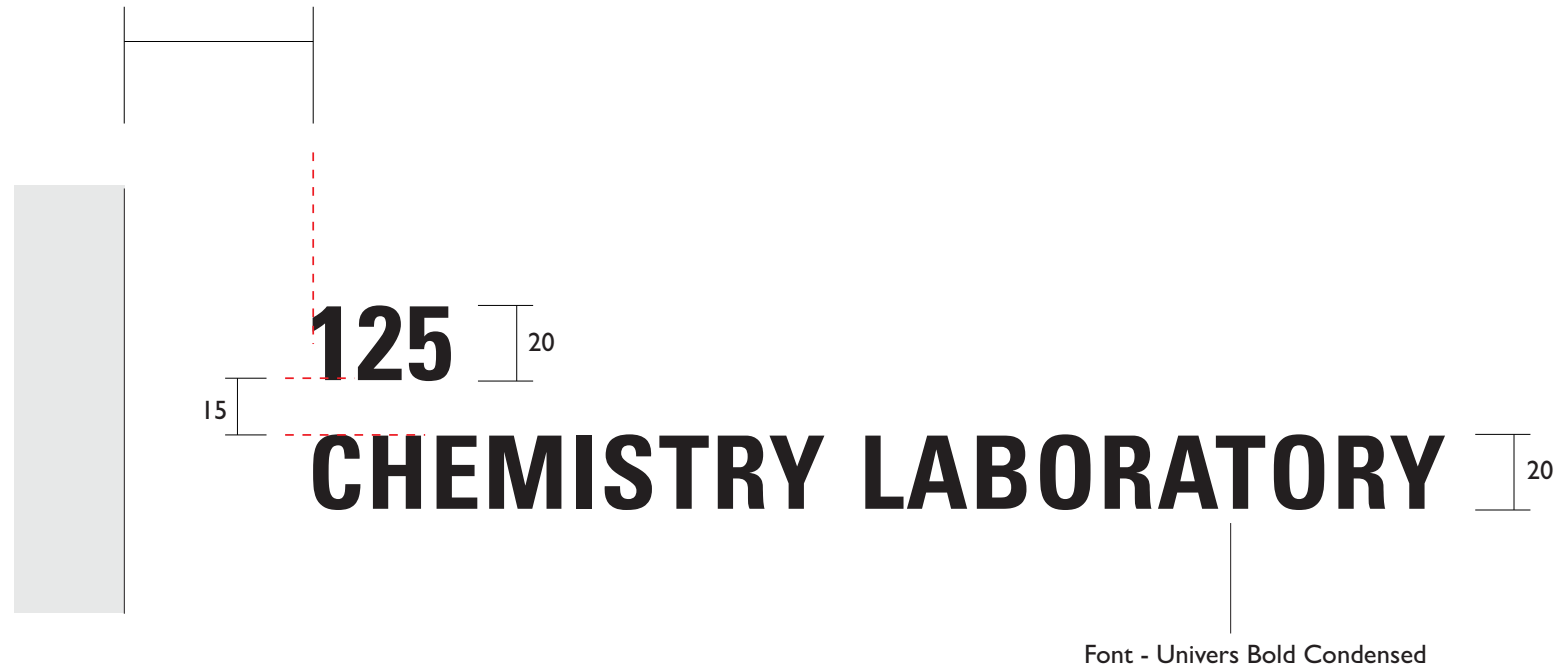
NOTE: Text will be specific to room or building.

Sign specification as Type 2a



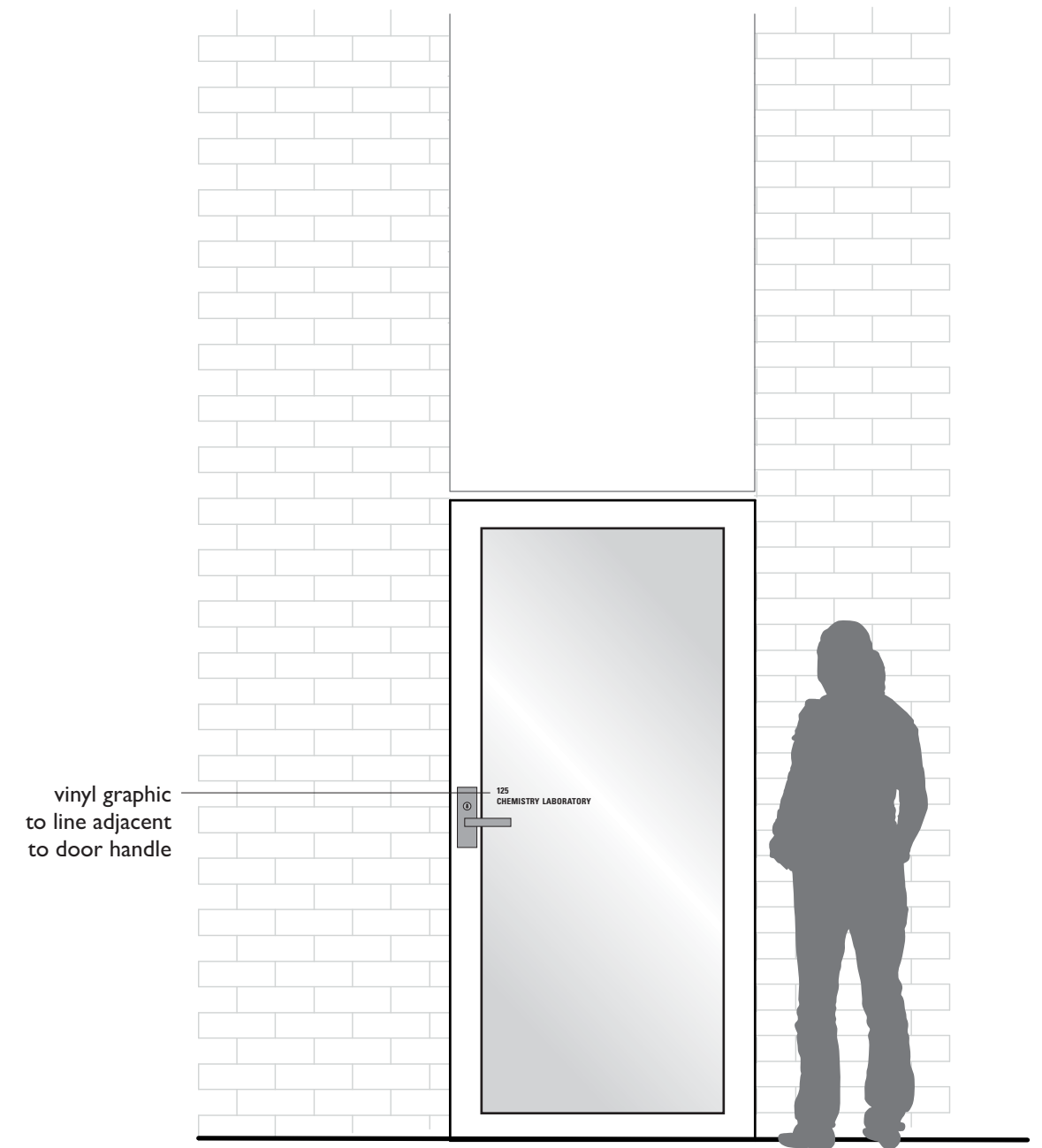
Type 2c - Glazed door with mullion  
**Front Elevation**  
Example only

min. margin 50mm  
from glazing edge  
(check for obscuring issues)



Type 3  
Front Elevation  
Example only

NOTE: Text will be specific to room or building.



Type 3 - Fully glazed door  
Example only